

Persistent growth of CO₂ emissions and implications for reaching climate targets

P. Friedlingstein^{1*}, R. M. Andrew², J. Rogelj^{3,4}, G. P. Peters², J. G. Canadell⁵, R. Knutti³, G. Luderer⁶, M. R. Raupach⁷, M. Schaeffer^{8,9}, D. P. van Vuuren^{10,11} and C. Le Quéré¹²

Efforts to limit climate change below a given temperature level require that global emissions of CO₂ cumulated over time remain below a limited quota. This quota varies depending on the temperature level, the desired probability of staying below this level and the contributions of other gases. In spite of this restriction, global emissions of CO₂ from fossil fuel combustion and cement production have continued to grow by 2.5% per year on average over the past decade. Two thirds of the CO₂ emission quota consistent with a 2 °C temperature limit has already been used, and the total quota will likely be exhausted in a further 30 years at the 2014 emissions rates. We show that CO₂ emissions track the high end of the latest generation of emissions scenarios, due to lower than anticipated carbon intensity improvements of emerging economies and higher global gross domestic product growth. In the absence of more stringent mitigation, these trends are set to continue and further reduce the remaining quota until the onset of a potential new climate agreement in 2020. Breaking current emission trends in the short term is key to retaining credible climate targets within a rapidly diminishing emission quota.

Recent studies have identified a near-linear relationship between global mean temperature change and cumulative CO₂ emissions^{1–9}. This relationship leads to an intuitive and appealing application in climate policy. A global quota on cumulative CO₂ emissions from all sources (fossil fuel combustion, industrial processes and land-use change) can be directly linked to a nominated temperature threshold with a specified probability of success. It can be used regardless of where, or to a large degree when, the emissions occur¹⁰.

Despite the many reservoirs and timescales that affect the response of the climate and carbon cycle¹¹, the proportionality between temperature and cumulative CO₂ emissions is remarkably robust across models. The relationship has been called the transient climate response to cumulative carbon emissions (TCRE) and was highlighted in the fifth assessment report (AR5) of the Intergovernmental Panel on Climate Change (IPCC)¹². The near-linear relationship has strong theoretical support: radiative forcing per emitted tonne of CO₂ decreases with higher CO₂ concentrations, an effect that is compensated by the weakening of the ocean and biosphere carbon sinks leading to a larger fraction of emitted CO₂ remaining in the atmosphere^{13–15}. The uncertainty in the TCRE, accounted for here in the given probability^{12,16}, thus comes from the climate response to CO₂ and the carbon cycle feedbacks^{14,17–19}. The near-linear relationship holds for cumulative CO₂ emissions less than about 7,500 GtCO₂ and until temperatures peak¹⁶.

Although CO₂ is the dominant anthropogenic forcing of the climate system²⁰, non-CO₂ greenhouse gases and aerosols also contribute to climate change. However, unlike for CO₂, the forcing

from short-lived agents is not related to the cumulative emissions but more directly determined by annual emissions^{21–23}. Therefore it is necessary to account for the additional warming from non-CO₂ agents separately when estimating CO₂ emission quotas compatible with a given temperature limit. The forcing from non-CO₂ agents has a considerable range across emissions scenarios in the recent IPCC Working Group III (WGIII) database²⁴, reflecting expected development pathways, coherently for CO₂ and other forcing agents given the underlying climate and other policies²⁵. Generally, forcing from non-CO₂ agents contributes 10–30% of the total forcing⁹ (Supplementary Fig. 1).

For a 66% probability of staying below a temperature threshold of 2 °C, CO₂ emissions would need to be kept below 3,670 GtCO₂ if accounting for forcing from CO₂ only (4,440 GtCO₂ for a 50% probability)^{12,26}. When accounting for both CO₂ and non-CO₂ forcing as represented in the multiple scenarios available in the IPCC WGIII database, the quota associated with a 66% probability of keeping warming below 2 °C reduces to 3,200 (2,900–3,600) GtCO₂ (3,500 (3,100–3,900) GtCO₂ for a 50% probability) (Table 1 and Supplementary Table 1). The estimate of cumulative budget can vary slightly (by about 15%) with the set of scenarios used, due to variations in the relative contribution of non-CO₂ radiative forcing (Supplementary Information).

In recent years, interest has grown in using cumulative emissions more directly in climate policy^{9,27–30}. In the following we update regional and global emission estimates up to 2014 and provide projections up to 2019. The emission estimates and trends are used to update the emission quota remaining from 2020, the potential year

¹College of Engineering, Mathematics and Physical Sciences, University of Exeter, Exeter EX4 4QF, UK, ²Center for International Climate and Environmental Research – Oslo (CICERO), PO Box 1129 Blindern, 0318 Oslo, Norway, ³Institute for Atmospheric and Climate Science, ETH Zurich, CH-8092 Zurich, Switzerland, ⁴Energy Program, International Institute for Applied Systems Analysis (IIASA), A-2361 Laxenburg, Austria, ⁵Global Carbon Project, CSIRO Ocean and Atmospheric Flagship, Canberra, ACT 2601, Australia, ⁶Potsdam Institute for Climate Impact Research (PIK), PO Box 601203, 14412 Potsdam, Germany, ⁷Climate Change Institute, Australian National University, Canberra, ACT 0200, Australia, ⁸Climate Analytics, 10969 Berlin, Germany, ⁹Environmental Systems Analysis Group, Wageningen University, PO Box 47, 6700 AA Wageningen, The Netherlands, ¹⁰PBL Netherlands Environmental Assessment Agency, PO Box 303, 3720 AH Bilthoven, The Netherlands, ¹¹Copernicus Institute of Sustainable Development, Faculty of Geosciences, Utrecht University, Budapestlaan 4, 3584 CD Utrecht, The Netherlands, ¹²Tyndall Centre for Climate Change Research, University of East Anglia, Norwich Research Park, Norwich NR4 7TJ, UK. *e-mail: p.friedlingstein@exeter.ac.uk

Table 1 | Cumulative carbon budget (GtCO₂), remaining emissions quotas from 2015 and 2020 (GtCO₂) and equivalent emission-years associated with a 66% or 50% probability of global-mean warming below 2 °C, 3 °C and 4 °C (relative to 1850–1900).

	2 °C		3 °C		4 °C	
	66%	50%	66%	50%	66%	50%
Cumulative budget (since 1870)	3,200 (2,900–3,600)	3,500 (3,100–3,900)	4,900 (4,500–5,700)	5,300 (5,000–6,200)	6,400 (6,100–7,700)	7,100 (7,000–8,500)
From 2015						
Remaining quota	1,200 (900–1,600)	1,500 (1,100–1,900)	2,900 (2,500–3,700)	3,300 (3,000–4,200)	4,400 (4,100–5,700)	5,100 (5,000–6,500)
Emission years	30 (22–40)	37 (27–47)	72 (62–92)	82 (74–104)	-	-
From 2020						
Remaining quota	1,000 (700–1,400)	1,300 (800–1,700)	2,700 (2,300–3,500)	3,100 (2,800–4,000)	4,200 (3,900–5,500)	4,900 (4,700–6,300)
Emission years	22 (15–30)	28 (19–38)	58 (49–75)	67 (60–86)	-	-

The equivalent emission-years correspond to the emission quota divided by the last available year of emissions, given for 2 °C and 3 °C only. Cumulative emissions and quotas are shown with a 5–95% range, rounded to the nearest 100.

for the onset of a new global climate agreement. We explore various uncertainties with cumulative emissions and the consequences for the remaining quota. We compare the emission trends and remaining emission quota with the emissions scenarios used in the recently published IPCC AR5 WGIII report that are consistent with keeping the global temperature increase below 2 °C above pre-industrial levels. This analysis thus brings together currently disjointed perspectives: (1) the dependence between cumulative emissions and global temperature changes, (2) the decomposition of recent trends in emission and (3) mitigation pathways from integrated assessment modelling, and analyses their consistency with the 2 °C climate target.

CO₂ emission update

The CO₂ emission quota compatible with a given temperature limit encompasses both past and future emissions. Since CO₂ is emitted each year, the remaining quota decreases with time. Here, we first update the remaining emissions quota by providing updated estimates of cumulative emissions through to 2013 before projecting emissions up to 2019. CO₂ emissions from fossil fuel combustion and cement production (*E_{FF}*) were estimated at 36.1 (34.3–37.9) GtCO₂ in 2013, 2.3% above emissions in 2012 (Fig. 1a, Methods). Cumulative *E_{FF}* from 1870 to 2013 were 1,430 ± 70 GtCO₂, with historical estimates based on energy consumption statistics³¹ and including uncertainties in the energy statistics and conversion rates^{31,32}. Recent attempts have been made to verify emissions from atmospheric measurements and modelling³³, but their interpretation is hindered by the influence of the carbon sinks^{34,35}.

On short timescales, the changes in CO₂ *E_{FF}* are generally driven by increases in economic activity as measured by the gross domestic product (GDP) and the decrease (improvement) in the carbon intensity of the world economy (*I_{FF}*)^{36,37}. A decomposition of emissions into a simplified Kaya identity, *E_{FF}* = GDP × *I_{FF}*, offers an effective way to understand short-term emissions trends^{38–42}. This simple relationship will be used throughout this article to understand drivers of recent emission changes and provide short-term emission projections.

In the past decade (2004–2013) global CO₂ emissions have had continued strong growth of 2.5% yr⁻¹. This growth rate was below the 3.3% yr⁻¹ averaged over 2000–2009 because of the lower 2.4% yr⁻¹ growth rate since 2010 (Fig. 1a). Using the simplified Kaya identity, the decrease in the growth rate of global CO₂ emissions in recent years has been due, in roughly equal parts, to a slight decrease in GDP growth rate and a slightly stronger decrease in *I_{FF}* (Supplementary Fig. 2). The positive decadal growth rate in global emissions is due to strong growth in economic activity and

emissions in emerging economies, partly due to the intensification of world trade^{43,44}, and partially offsetting emissions in some large developed countries⁴⁴. These patterns have led to a significant regional redistribution in emissions in all key dimensions: absolute, per-capita, and cumulative (Table 2, Fig. 2a). The top four emitters play a critical role in emissions growth, China accounted for 57% of the growth in global emissions from 2012–2013, USA for 20%, India for 17%, while EU28 had a negative contribution of -11%.

The developed countries defined in Annex B of the Kyoto Protocol had a 0.4% increase in emissions in 2013, reversing the trend of decreased emissions since 2007. The USA’s 2.9% growth in emissions in 2013 reversed the nation’s trend of decreasing

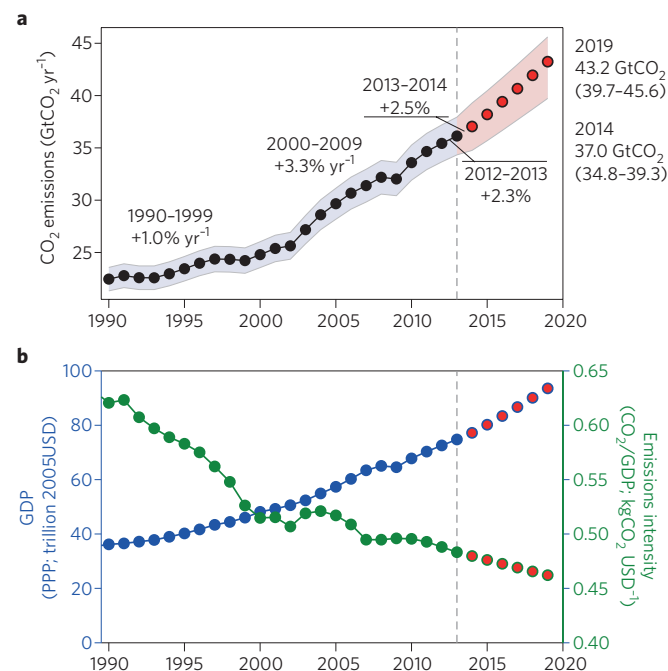


Figure 1 | Global CO₂ emissions and decomposition into GDP and carbon intensity. a, b, Global CO₂ emissions from fossil fuel combustion and cement production (**a**; black dots); and global GDP (blue dots) and carbon intensity of GDP (*I_{FF}*, green dots) (**b**) over 1990–2013 period and estimates to 2019 (red dots). Historical emissions are from CDIAC and BP, while GDP are from IEA and IMF (Methods). Uncertainty in CO₂ emissions is ± 5% (1σ) over the historical period with an additional uncertainty for the projection based on a sensitivity analysis of GDP and *I_{FF}*. PPP, purchasing power parity.

Table 2 | Estimated CO₂ emissions from fossil fuel combustion and cement production for 2013, 2014 and 2019, together with growth rates.

	2013				2014		2019		
	Total (GtCO ₂ yr ⁻¹)	Per capita (tCO ₂ p ⁻¹)	Cumulative 1870–2013 (GtCO ₂)	Growth 2012–13 (%)*	Total (GtCO ₂ yr ⁻¹)	Growth 2013–14 (%)	Total (GtCO ₂ yr ⁻¹)	Cumulative 1870–2019 (GtCO ₂)	Growth 2014–19 (%yr ⁻¹)
World	36.1 (34.3–37.9)	5.0	1,430 (1,360–1,500)	2.3	37.0 (34.8–39.3)	2.5 (1.3–3.5)	43.2 (39.7–45.6)	1,670 (1,590–1,750)	3.1
China	10.0	7.2	161	4.2	10.4	4.5	12.7	230	3.9
US	5.2	16.4	370	2.9	5.2	–0.9	5.2	401	0.2
EU28	3.5	6.8	328	–1.8	3.4	–1.1	3.3	348	–0.9
India	2.4	1.9	44	5.1	2.5	4.9	3.4	62	5.9

*We make leap-year adjustments to these growth rates and this causes growth rates to go up approximately 0.3% if the first year is a leap year and down 0.3% if the second year is a leap year.

emissions since 2007 as a result of a return to a stronger economic growth rate (2.2%), and an unusual increase in I_{FF} (0.7%) (Fig. 2c and Supplementary Fig. 2c), largely because coal has regained some market share from natural gas in the electric power sector⁴⁵. The EU28's 1.8% decrease in emissions in 2013 continued the persistent downward trend despite increased coal consumption in some EU countries (for example, Poland, Germany and Finland). The decrease in emissions in EU28 was driven by a relatively low GDP growth rate (0.5%) and a decrease in I_{FF} (2.2%) (Fig. 2d and Supplementary Fig. 2d), with the largest emission decreases occurring in Spain, Italy and the United Kingdom, and the largest increase in Germany.

Developing countries and emerging economies (taken as non-Annex B) had a 3.4% increase in emissions in 2013, continuing previous trends⁴². China's 4.2% growth in emissions in 2013 continued its decelerating growth (Fig. 2b) from 10% yr⁻¹ for 2000–2009 to 6.1% yr⁻¹ for 2010–2013. The reduction of the emissions growth rate in China is due to decreasing GDP growth combined with a stronger decrease in I_{FF} (Supplementary Fig. 2b). It is too early to say whether the recent decline in I_{FF} in 2013 can be attributed to dedicated mitigation policies. Despite this strong decrease in I_{FF} , the high absolute I_{FF} in China, combined with strong GDP growth, is the main reason for the weakening I_{FF} at the global level (Supplementary Fig. 3). India's 5.1% growth in emissions in 2013 compares to growth rates of 5.7% yr⁻¹ from 2000–2009 and 6.4% yr⁻¹ from 2010–2013 (Fig. 2e). The recent Indian emissions growth was driven by robust economic growth and by an increase in I_{FF} (Supplementary Fig. 2e). India is the only major economy with a sustained increase in I_{FF} (carbonization of its economy) from 2010–2013 (Fig. 2 and Supplementary Fig. 2).

The robust relationship between GDP and E_{FF} that emerged in the past (Figs 1 and 2) is used here to estimate future emissions on short timescales using projected growth rates of GDP by the International Monetary Fund (IMF)⁴⁶ combined with an assumption of persistent trends in I_{FF} ^{40,42}. This method provides first-order estimates of CO₂ emissions in the absence of additional emission mitigation policies. Based on the forecast 3.4% increase of global GDP in 2014 (IMF)⁴⁷, and the trend in I_{FF} over 2004–2013 of –0.7% yr⁻¹, we estimate 2014 E_{FF} to be 37.0 (35.2–38.9) GtCO₂, or 2.5% (1.3%–3.5%) above 2013 and 65% above 1990 emissions (Fig. 1). The range takes into account the uncertainty in IMF GDP projections and variability in I_{FF} caused by a range of socio-economic factors⁴² (Supplementary Information). Similar estimates are made at the national level (Table 2 and Fig. 2). While strong inertial factors maintain global emissions growth within a relatively small range, at the regional level significant and unexpected events can lead to strong deviations, and regional uncertainty is much more difficult to quantify. We therefore do not provide uncertainty estimates at the regional level, but acknowledge that they are potentially large.

Emissions from land-use changes have been stable or decreasing in the past decade⁴⁸ and currently contribute about 8% of total CO₂

emissions. We estimate land-use change emissions in 2013 using the most recent global carbon budget⁴⁹ based on a combination of a book-keeping estimate⁴⁸ and fire emissions in deforested areas⁵⁰ (Methods). We estimate emissions of 3.2 ± 1.8 GtCO₂ yr⁻¹ in 2013 and use the 2004–2013 average of 3.3 ± 1.8 GtCO₂ yr⁻¹ for 2014–2019. Thus, total CO₂ emissions from all sources are estimated to be 39.4 (36.8–41.9) GtCO₂ in 2013 and 40.3 (37.7–42.9) GtCO₂ in 2014.

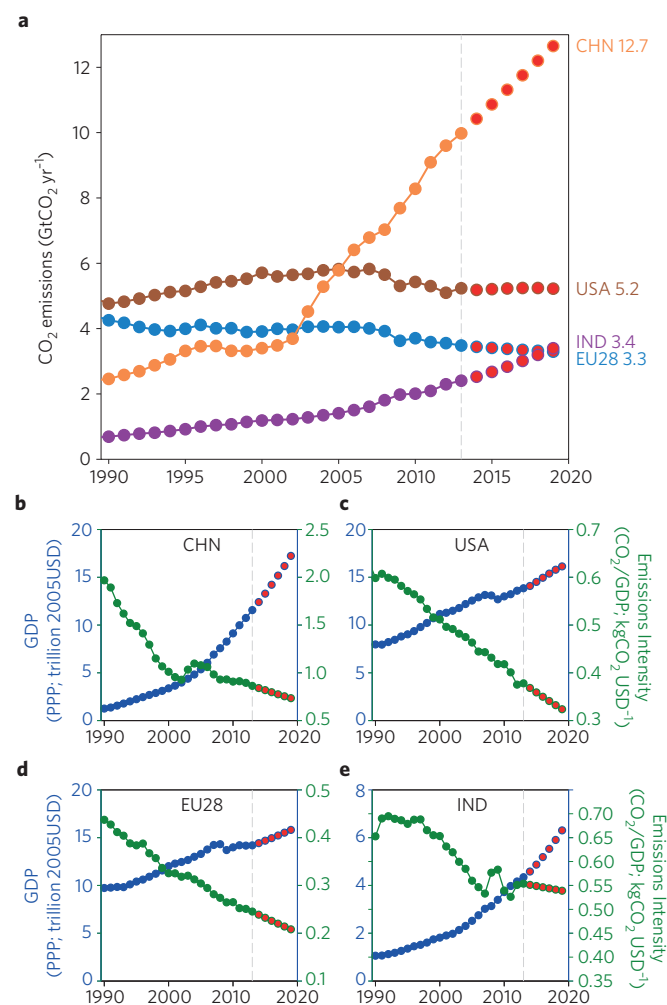


Figure 2 | Regional CO₂ emissions and decomposition into GDP and carbon intensity. **a, b**, The CO₂ emissions from the top four emitters (China, US, EU28, India) (**a**) and the GDP and I_{FF} in each region (**b–e**) over the historical (1990–2013) and future (2014–2019) periods. See Fig. 1 caption for details and Supplementary Fig. 2 for an annual decomposition of the trends.

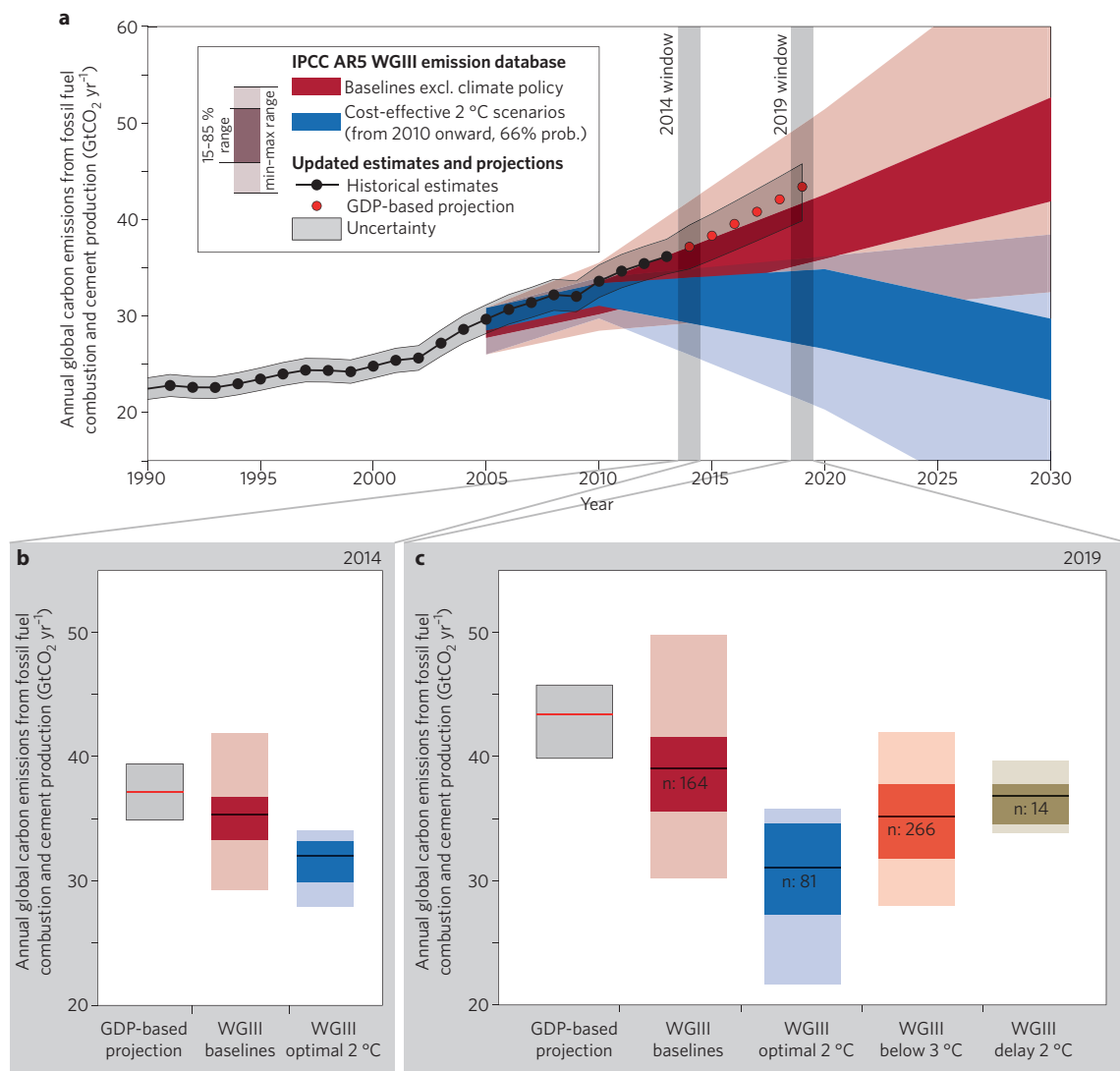


Figure 3 | Consequences of current emissions and projected near-term trends. a-c. Comparison of annual carbon emissions from fossil fuel combustion and cement production (a) together with time slices for 2014 (b) and 2019 (c). The scenarios are from the IPCC AR5 WGIII emission database (coloured regions), and updated estimates (black dots) and projections (red dots) from this study. Horizontal lines show median estimates. Part c includes additional 2019 emission levels for the scenarios of the WGIII database that remain below 3 °C (orange), and those resulting from a full implementation of Cancun pledges (beige). The values in panel c indicate the number of scenarios available in the WGIII scenario database for each category.

Based on combined data and our 2014 estimate, cumulative CO₂ emissions from all sources during 1870–2014 will reach 2,000 ± 200 GtCO₂. About 25% of this 145-year period was emitted over the last 15 years alone (2000–2014). The cumulative emissions from 1870 were 75% from fossil fuels and cement production and 25% from land-use change.

Remaining CO₂ quota

Taking into account CO₂ emissions prior to 2014, the remaining emissions quota (from 2015 onwards) associated with a 66% probability of keeping warming below 2 °C is estimated to be 1,200 (900–1,600) GtCO₂. This 2 °C quota will be exhausted in about 30 (22–40) ‘equivalent emission-years’ at the 2014 emission level (40.3 GtCO₂ yr⁻¹). Owing to inter-annual and decadal variability^{51–53}, the actual year when 2 °C will be reached is uncertain. The remaining quota associated with a 50% probability of committing to 2 °C of warming is estimated to be 1,500 (1,100–1,900) GtCO₂ (Table 1), corresponding to 37 (27–47) equivalent emission-years at the 2014 emission level. The remaining quota is significantly higher for 3 °C (Table 1), but it is finite for even the highest warming levels.

The equivalent emission-years indicator is a simple and transparent metric for communicating the size of the remaining carbon budget compatible with a warming level given our current emission levels.

Many of the low stabilization scenarios in the literature, such as the representative concentration pathway (RCP) 2.6, rely on emissions below zero (so-called negative emissions) in the second half of the century, in effect compensating for emissions today^{24,54}. Most models achieve negative emissions through intensive use of bioenergy coupled with carbon capture and storage (BECCS)^{55–57}, and the availability of BECCS is important in cost-effective 2 °C mitigation pathways^{55,56}. Negative emissions at the global level will lead to a peak and decline in cumulative emissions⁵⁸.

The validity of the TCRE in a negative emissions scenario remains to be fully assessed; analyses with comprehensive Earth system models are required to fully explore the carbon cycle and climate response to negative emission scenarios, though research has started in this area^{10,59–61}. There is also a need to fully explore the risks of relying on BECCS (currently unavailable at commercial scale) for 2 °C mitigation pathways. Studies show that explicitly limiting or eliminating the availability of carbon capture and storage

(CCS) and carbon dioxide removal (CDR) technologies in mitigation scenarios does not necessarily rule out the feasibility of a 2 °C limit, but does increase the need for deep emission reductions in the short term^{55,56,62}. The few studies that explored 2 °C pathways without CCS and CDR from emission levels that are in line with the current emission reduction by 2020 pledges of countries found these to be either unfeasible^{63–68} or extremely costly^{64,67–69}.

Emission projections and climate targets

Current emission growth rates are twice as large as in the 1990s despite 20 years of international climate negotiations under the United Nations Framework Convention on Climate Change (UNFCCC). For illustration, we expand our GDP-based emissions projections to 2019 using GDP projections from the IMF^{46,47} and continued trends in I_{FF} . Assuming a continuation of past climate policy trends through to 2019 (the last available year of IMF's GDP projections), we project an average growth of fossil fuel and cement emissions of 3.1% yr⁻¹ to reach 43.2 (39.7–45.6) GtCO₂ yr⁻¹ in 2019. The uncertainty range accounts for the uncertainty in GDP and fossil fuel intensity projections (Supplementary Information), but does not account for unforeseen events, for example a global financial crisis⁴⁰. Policies or trends that further reduce I_{FF} or would lower GDP growth rates, would directly reduce these emission estimates. The recent US policy announcements on power plant emissions or China's energy efficiency and renewable targets would at least continue existing I_{FF} trends, but it is unclear at present if they would lead to stronger decreases in I_{FF} . Emission projections accounting for current policies such as those from the International Energy Agency⁷⁰ and baseline projections available in the literature and summarized in the IPCC WGIII database often show a lower growth rate than our GDP-based projection (Figs 3 and 4), either based on an assumption of slower GDP growth or a stronger decrease in I_{FF} .

We additionally extend these projections to the regional level using the same methods. Figure 2 shows the regional trends in GDP, I_{FF} and hence E_{FF} . In general, anticipated GDP growth is offset by decreases in I_{FF} (Supplementary Fig. 2). We find that emissions from China would continue to grow at 3.9% yr⁻¹ over 2014–2019, USA emissions at 0.2% yr⁻¹ similar to recent estimates by the US Energy Information Administration⁷¹, EU28 emissions reduce by -0.9% yr⁻¹ and Indian emissions grow at 5.9% yr⁻¹ (Table 2, Fig. 2 and Supplementary Fig. 2).

Based on these projections, the cumulative fossil fuel and cement emissions over 2015–2019 are estimated to be 200 (190–210) GtCO₂. Assuming stable land-use-change emissions, we expect these to contribute an additional 16 (8–24) GtCO₂ during that period. This brings total cumulative emissions for 2015–2019 to 220 (200–240) GtCO₂, and the remaining emission quota from 2020, associated with a 66% probability of limiting warming below 2 °C, down to 1,000 (700–1,400) GtCO₂, or 22 (15–30) equivalent emission-years from 2020 onwards for 3 °C and 4 °C limits are given in Table 1.

Our GDP-based emission estimates are higher than all cost-effective 2 °C scenarios in the literature (Fig. 3) for 2010–2019. In fact, current IPCC WGIII scenarios that attempt to keep warming below 2 °C, show lower emissions for 2014 than our projection (Fig. 3b), mostly because these scenarios were published before 2014 and assumed a 'cost-optimal' mitigation pathway starting in 2010. In 2019, the discrepancy between our GDP-based estimates and the cost-effective mitigation pathways is even more exacerbated, with the GDP-based emissions projections being about 40% higher than the levels suggested by cost-effective 2 °C scenarios (Fig. 3c). This indicates that without a rapid and clear break in the historical trends of I_{FF} or GDP the opportunity to follow cost-effective 2 °C mitigation pathways in the near-term, as reported by the IPCC WGIII, has passed, and the challenges to mitigation would

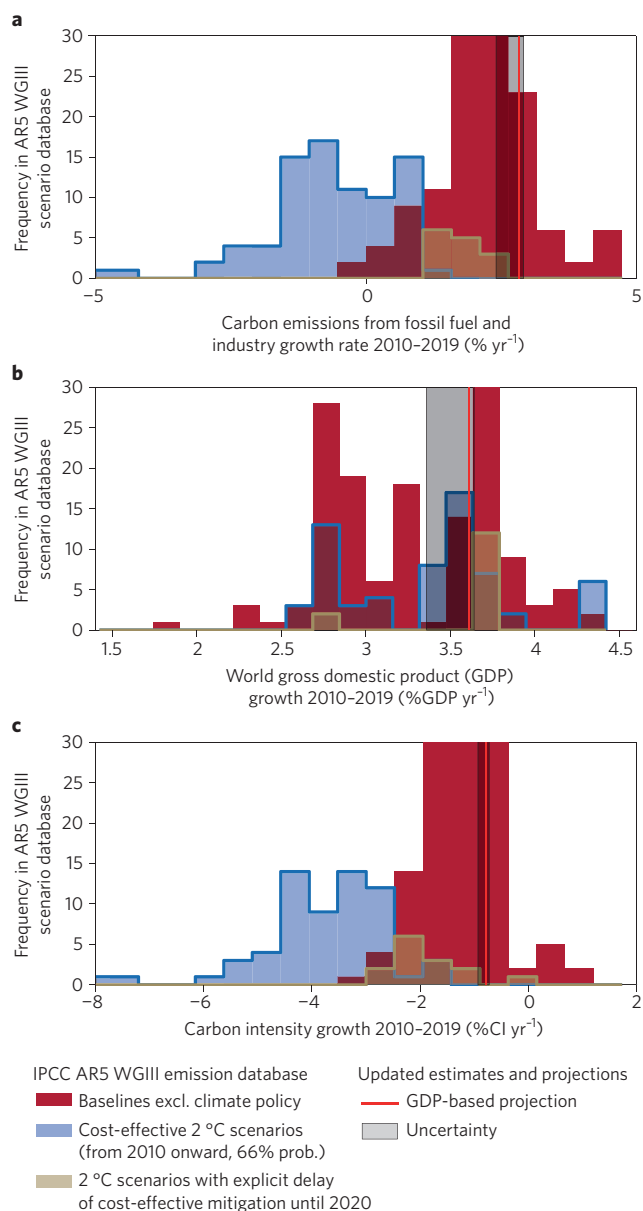


Figure 4 | Comparison of trends in the IPCC AR5 WGIII scenario database and projected near-term trends. a–c, Histogram of growth rates 2010–2019 in global CO₂ emissions (a), world GDP (b) and carbon intensity of GDP (c). Colours differentiate the baseline scenarios (red) and mitigation scenarios without delay (blue) and with it (brown), and our GDP-based projections (red vertical lines) with their uncertainty (grey).

need to be framed around the more costly scenarios that assume a delay in comprehensive mitigation^{64,67–69}.

The IPCC WGIII mitigation scenarios consistent with the 2 °C limit show a reduction or even reversal in the CO₂ emissions growth due to radical decreases of I_{FF} (Fig. 4c). While GDP growth rates are similar to our estimate (Fig. 4b), they show carbon intensity decreasing by 2 to 5% per year, as opposed to our estimate of 0.8% per year based on recent trends^{64,66–68} (Fig. 4c). The rapidly changing structure of the world economy with a growing contribution from emerging economies and developing countries with a high carbon-intensity drives increases in I_{FF} at the global level (Supplementary Fig. 3) and further exacerbates the mitigation challenge. For emerging economies and developing countries, the recent carbon intensity decreases, which we use for our near-term projections, have been significantly smaller than the near-term trends anticipated by most

emission scenarios, even baseline scenarios in absence of climate policy (see Supplementary Figs 4–8 for a comparison of regional trends in GDP and I_{FF} with IPCC WGIII emission scenarios).

Climate policy implications

Climate policy discussions have progressed since 2010 and many countries have pledged to limit or reduce their greenhouse gas emissions by 2020^{72–74}. While GDP-based projections of emissions are considerably higher than those of the cost-optimal 2 °C scenario, recent studies have shown that even from such high emission levels in 2020, options exist to limit warming to below 2 °C^{64,66–69}. However, following such trajectories has important consequences and entails risks. Five main challenges and trade-offs must be overcome^{64,66–68,75–77}: (1) higher emissions in the near term require stronger emission reductions thereafter — a trade-off that has become trivially understandable since the introduction of the TCRE concept and the quantification of a 2 °C consistent carbon emission quota; (2) an increased lock-in into carbon-intensive and energy-intensive infrastructure^{66,67,78,79} — the recent trends discussed above provide real-world support for this concern; (3) reduced societal choices for future generations — modest near-term emission reductions increase the dependence on specific mitigation technologies and therewith foreclose choices and options of future generations^{55,64,66–69,79} (dependence on negative emissions technologies is one example); (4) higher overall costs and economic challenges; and (5) higher climate risks, for example through higher near-term rates of change, higher cumulative climate impact damages, or an increased probability of abrupt or irreversible changes^{64,68,77,80}.

Stabilization of global temperature rise at any level requires global carbon emissions to become eventually virtually zero⁸¹. The existence of a limited global emissions quota raises many issues of how to share remaining emissions, including how to take into account historical responsibilities and development needs. These issues are discussed in a companion paper⁸². Irrespective of the difficulty of how to share the remaining quota, our review of recent emission trends and the mitigation scenario literature shows that, if keeping warming below 2 °C relative to pre-industrial levels is to be maintained as an overarching objective, a break in current emission trends is urgently needed in the short term.

Methods

Data. Global and regional CO₂ emissions from fossil fuel combustion and cement emissions are based on emissions estimates from the Carbon Dioxide Information Analysis Center⁸³ (CDIAC), extended to 2013 using anomalies in energy statistics from BP (ref. 84) following the methodology and country definitions used in the Global Carbon Budget⁴². CO₂ emissions from land-use change are estimated using a bookkeeping method⁴⁸ from 1850–2010 and then supplemented and extended from 1997–2013 using satellite-based fire emissions in deforestation areas⁵⁰, following the methodology in the most recent Global Carbon Budget⁴⁹. GDP data is from the International Energy Agency⁸⁵ up until 2011 and extended to 2019 using the growth rates from two editions of the IMF's World Economic Outlook^{46,47}. The IPCC WGIII scenarios are obtained from the scenario database^{24,86}.

Uncertainty. We place an uncertainty of $\pm 5\%$ (1σ) on the fossil fuel and cement emissions^{31,42} consistent with recent detailed analysis of uncertainty³² and apply the same uncertainty for the cumulative emissions (Supplementary Information). The uncertainty in emissions projections includes the uncertainty in future GDP estimates and different time periods for estimating I_{FF} and consecutive emissions estimates are assumed to be uncorrelated (Supplementary Information). The allowable cumulative emissions quota is derived with a certain modelled likelihood (% of model runs) that a specified warming level is exceeded (for example, 2 °C above the average over 1850–1900) including non-CO₂ forcing (Supplementary Information). Quotas are shown with a 5%–95% range, rounded to the nearest 100. The range in equivalent emission-years is obtained taking the range in remaining budget, neglecting the relatively small uncertainty due to global annual emissions uncertainty.

Growth rates. Growth rates between two years (for example, 2012–2013) are based on the percentage increase over the first year. To prevent invalid interpretations of annual change we make leap-year adjustments to annual growth rates, such that growth rates go up approximately 0.3% if the first year is a leap year and down 0.3% if the second year is a leap year. Growth rates over more than two consecutive years are computed by taking the first derivative of the linear regression of the logarithm of all variables available in this time period (Supplementary Information).

Received 26 June 2014; accepted 18 August 2014;
published online 21 September 2014

References

- Allen, M. R. *et al.* Warming caused by cumulative carbon emissions towards the trillionth tonne. *Nature* **458**, 1163–1166 (2009).
- Matthews, H., Gillett, N., Stott, P. & Zickfeld, K. The proportionality of global warming to cumulative carbon emissions. *Nature* **459**, 829–832 (2009).
- Meinshausen, M. *et al.* Greenhouse-gas emission targets for limiting global warming to 2 °C. *Nature* **458**, 1158–1162 (2009).
- Raupach, M. R. The exponential eigenmodes of the carbon-climate system, and their implications for ratios of responses to forcings. *Earth Syst. Dynam.* **4**, 31–49 (2013).
- Raupach, M. R. *et al.* The relationship between peak warming and cumulative CO₂ emissions, and its use to quantify vulnerabilities in the carbon-climate-human system. *Tellus B* **63**, 145–164 (2011).
- Zickfeld, K., Eby, M., Matthews, H. & Weaver, A. Setting cumulative emissions targets to reduce the risk of dangerous climate change. *Proc. Natl Acad. Sci. USA* **106**, 16129–16134 (2009).
- Gillett, N. P., Arora, V. K., Matthews, D. & Allen, M. R. Constraining the ratio of global warming to cumulative CO₂ emissions using CMIP5 simulations. *J. Clim.* **26**, 6844–6858 (2013).
- van Vuuren, D. P. *et al.* Temperature increase of 21st century mitigation scenarios. *Proc. Natl Acad. Sci. USA* **105**, 15258–15262 (2008).
- Matthews, H. D., Solomon, S. & Pierrehumbert, R. Cumulative carbon as a policy framework for achieving climate stabilization. *Phil. Trans. R. Soc. A* **370**, 4365–4379 (2012).
- Zickfeld, K., Arora, V. K. & Gillett, N. P. Is the climate response to CO₂ emissions path dependent? *Geophys. Res. Lett.* **39**, L05703 (2012).
- Joos, F. *et al.* Carbon dioxide and climate impulse response functions for the computation of greenhouse gas metrics: a multi-model analysis. *Atmos. Chem. Phys.* **13**, 2793–2825 (2013).
- IPCC in *Climate Change 2013: The Physical Science Basis*. (eds Stocker, T. F. *et al.*) 1–29 (Cambridge Univ. Press, 2013).
- Maier-Reimer, E. & Hasselmann, K. Transport and storage of CO₂ in the ocean — an inorganic ocean-circulation carbon cycle model. *Clim. Dynam.* **2**, 63–90 (1987).
- Friedlingstein, P. *et al.* Climate-carbon cycle feedback analysis: Results from the (CMIP)-M-4 model intercomparison. *J. Clim.* **19**, 3337–3353 (2006).
- Caldeira, K. & Kasting, J. F. Insensitivity of global warming potentials to carbon-dioxide emission scenarios. *Nature* **366**, 251–253 (1993).
- Collins, M. *et al.* in *Climate Change 2013: The Physical Science Basis*. (eds Stocker, T. F. *et al.*) Ch. 12, 1029–1136 (Cambridge Univ. Press, 2013).
- Ciais, P. *et al.* in *Climate Change 2013: The Physical Science Basis*. (eds Stocker, T. F. *et al.*) Ch. 6, 465–570 (IPCC, Cambridge Univ. Press, 2013).
- Knutti, R. & Hegerl, G. The equilibrium sensitivity of the Earth's temperature to radiation changes. *Nature Geosci.* **1**, 735–743 (2008).
- Gregory, J. M., Jones, C. D., Cadule, P. & Friedlingstein, P. Quantifying carbon cycle feedbacks. *J. Clim.* **22**, 5232–5250 (2009).
- Myhre, G. *et al.* in *Climate Change 2013: The Physical Science Basis*. (eds Stocker, T. F. *et al.*) Ch. 8, 659–740 (IPCC, Cambridge Univ. Press, 2013).
- Bowerman, N. H. A. *et al.* The role of short-lived climate pollutants in meeting temperature goals. *Nature Clim. Change* **3**, 1021–1024 (2013).
- Smith, S. M. *et al.* Equivalence of greenhouse-gas emissions for peak temperature limits. *Nature Clim. Change* **2**, 535–538 (2012).
- Pierrehumbert, R. T. Short-lived climate pollution. *Annu. Rev. Earth Planet Sci.* **42**, 341–379 (2014).
- Clarke, L. *et al.* in *Climate Change 2014: Mitigation of Climate Change*. (eds Edenhofer, O. *et al.*) Ch. 6 (IPCC, Cambridge Univ. Press, 2014).
- Rogelj, J. *et al.* Air-pollution emission ranges consistent with the representative concentration pathways. *Nature Clim. Change* **4**, 446–450 (2014).
- Collins, M. *et al.* in *Climate Change 2013 The Physical Science Basis* (eds Stocker, T. F. *et al.*) Ch. 12, 1029–1136 (IPCC, Cambridge Univ. Press, 2013).
- Anderson, K., Bows, A. & Mander, S. From long-term targets to cumulative emission pathways: Reframing UK climate policy. *Energy Policy* **36**, 3714–3722 (2008).
- Anderson, K. & Bows, A. Beyond 'dangerous' climate change: emission scenarios for a new world. *Phil. Trans. R. Soc. A* **369**, 20–44 (2011).
- Allen, M. R. & Stocker, T. F. Impact of delay in reducing carbon dioxide emissions. *Nature Clim. Change* **4**, 23–26 (2014).
- Stocker, T. F. The closing door of climate targets. *Science* **339**, 280–282 (2013).
- Andres, R. J. *et al.* A synthesis of carbon dioxide emissions from fossil-fuel combustion. *Biogeosciences* **9**, 1845–1871 (2012).
- Andres, R. J., Boden, T. A. & Hiddon, D. A new evaluation of the uncertainty associated with CDIAC estimates of fossil fuel carbon dioxide emission. *Tellus B* **66**, 23616 (2014).

33. Francey, R. J. *et al.* Atmospheric verification of anthropogenic CO₂ emission trends. *Nature Clim. Change* **3**, 520–524 (2013).
34. Raupach, M. R., Queré, C. L., Peters, G. P. & Canadell, J. G. Anthropogenic CO₂ emissions. *Nature Clim. Change* **3**, 603–604 (2013).
35. Francey, R. J. *et al.* Reply to ‘Anthropogenic CO₂ emissions’. *Nature Clim. Change* **3**, 604–604 (2013).
36. Raupach, M. R. *et al.* Global and regional drivers of accelerating CO₂ emissions. *Proc. Natl Acad. Sci. USA* **104**, 10288–10293 (2007).
37. Pielke R. Jr *The Climate Fix* (Basic Books, 2010).
38. Le Quéré, C. *et al.* Trends in the sources and sinks of carbon dioxide. *Nature Geosci.* **2**, 831–836 (2009).
39. Friedlingstein, P. *et al.* Update on CO₂ emissions. *Nature Geosci.* **3**, 811–812 (2010).
40. Peters, G. P. *et al.* Rapid growth in CO₂ emissions after the 2008–2009 global financial crisis. *Nature Clim. Change* **2**, 2–4 (2012).
41. Peters, G. P. *et al.* The challenge to keep global warming below 2 °C. *Nature Clim. Change* **3**, 4–6 (2013).
42. Le Quéré, C. *et al.* Global carbon budget 2013. *Earth Syst. Sci. Data* **6**, 235–263 (2014).
43. Davis, S. J. & Caldeira, K. Consumption-based accounting of CO₂ emissions. *Proc. Natl Acad. Sci. USA* **107**, 5687–5692 (2010).
44. Peters, G. P., Minx, J. C., Weber, C. L. & Edenhofer, O. Growth in emission transfers via international trade from 1990 to 2008. *Proc. Natl Acad. Sci. USA* **108**, 8903–8908 (2011).
45. <http://www.eia.gov/todayinenergy/detail.cfm?id=14571>
46. *World Economic Outlook: Recovery Strengthens, Remains Uneven* (IMF, 2014); <http://www.imf.org/external/ns/cs.aspx?id=29>
47. *World Economic Outlook Update: An Uneven Global Recovery Continues* (IMF, 2014); <http://www.imf.org/external/pubs/ft/weo/2014/update/02>
48. Houghton, R. A. *et al.* Carbon emissions from land use and land-cover change. *Biogeosciences* **9**, 5125–5142 (2012).
49. Le Quéré, C. *et al.* Global carbon budget 2014. *Earth Syst. Sci. Data Discuss.* <http://dx.doi.org/10.5194/essdd-7-521-2014> (2014).
50. Giglio, L., Randerson, J. T. & van der Werf, G. R. Analysis of daily, monthly, and annual burned area using the fourth-generation global fire emissions database (GFED4). *J. Geophys. Res. Biogeosci.* **118**, 317–328 (2013).
51. Deser, C., Knutti, R., Solomon, S. & Phillips, A. S. Communication of the role of natural variability in future North American climate. *Nature Clim. Change* **2**, 775–779 (2012).
52. Tebaldi, C. & Friedlingstein, P. Delayed detection of climate mitigation benefits due to climate inertia and variability. *Proc. Natl Acad. Sci. USA* **110**, 17229–17234 (2013).
53. Ricke, K. L. & Caldeira, K. Natural climate variability and future climate policy. *Nature Clim. Change* **4**, 333–338 (2014).
54. van Vuuren, D. P. *et al.* RCP3-PD: Exploring the possibilities to limit global mean temperature change to less than 2 °C. *Climatic Change* **109**, 95–116 (2011).
55. Azar, C., Lindgren, K., Larson, E. & Mollersten, K. Carbon capture and storage from fossil fuels and biomass - Costs and potential role in stabilizing the atmosphere. *Climatic Change* **74**, 47–79 (2006).
56. Azar, C. *et al.* The feasibility of low CO₂ concentration targets and the role of bio-energy with carbon capture and storage (BECCS). *Climatic Change* **100**, 195–202 (2010).
57. Tavoni, M. & Socolow, R. Modeling meets science and technology: an introduction to a special issue on negative emissions. *Climatic Change* **118**, 1–14 (2013).
58. van Vuuren, D. P. & Riahi, K. The relationship between short-term emissions and long-term concentration targets. *Climatic Change* **104**, 793–801 (2011).
59. Boucher, O. *et al.* Reversibility in an Earth System model in response to CO₂ concentration changes. *Environ. Res. Lett.* **7**, 024013 (2012).
60. Vichi, M., Navarra, A. & Fogli, P. G. Adjustment of the natural ocean carbon cycle to negative emission rates. *Climatic Change* **118**, 105–118 (2013).
61. Long, C. & Ken, C. Atmospheric carbon dioxide removal: long-term consequences and commitment. *Environ. Res. Lett.* **5**, 024011 (2010).
62. Krieger, E., Edenhofer, O., Reuster, L., Luderer, G. & Klein, D. Is atmospheric carbon dioxide removal a game changer for climate change mitigation? *Climatic Change* **118**, 45–57 (2013).
63. Krieger, E. *et al.* The role of technology for achieving climate policy objectives: overview of the EMF 27 study on technology and climate policy strategies. *Climatic Change* **123**, 353–367 (2013).
64. Luderer, G. *et al.* Economic mitigation challenges: how further delay closes the door for achieving climate targets. *Environ. Res. Lett.* **8**, 034033 (2013).
65. Riahi, K. *et al.* in *Global Energy Assessment — Toward a Sustainable Future* Ch. 17, 1203–1306 (Cambridge Univ. Press and IIASA, 2012).
66. Riahi, K. *et al.* Locked into Copenhagen pledges — Implications of short-term emission targets for the cost and feasibility of long-term climate goals. *Technol. Forecast. Soc. Change* <http://dx.doi.org/10.1016/j.techfore.2013.09.016> (2013).
67. Rogelj, J., McCollum, D. L., O’Neill, B. C. & Riahi, K. 2020 emissions levels required to limit warming to below 2 °C. *Nature Clim. Change* **3**, 405–412 (2013).
68. Rogelj, J., McCollum, D. L., Reisinger, A., Meinshausen, M. & Riahi, K. Probabilistic cost estimates for climate change mitigation. *Nature* **493**, 79–83 (2013).
69. van Vliet, J. *et al.* Copenhagen Accord Pledges imply higher costs for staying below 2 °C warming. *Climatic Change* **113**, 551–561 (2012).
70. *World Energy Investment Outlook* (IEA, 2014).
71. *Annual Energy Outlook* (EIA, 2014).
72. Höhne, N. *et al.* National GHG emissions reduction pledges and 2 °C: comparison of studies. *Climate Policy* **12**, 356–377 (2012).
73. *The Emissions Gap Report 2012* (UNEP, 2012).
74. *The Emissions Gap Report 2013* 64 (UNEP, 2013).
75. Krieger, E. *et al.* Making or breaking climate targets: The AMPERE study on staged accession scenarios for climate policy. *Technol. Forecast. Soc. Change* <http://dx.doi.org/10.1016/j.techfore.2013.09.021> (2014).
76. Krieger, E. *et al.* What does the 2 °C target imply for a global climate agreement in 2020? The LIMITS study on Durban Platform scenarios. *Clim. Change Econ.* **4**, 1340008 (2013).
77. Schaeffer, M. *et al.* Mid- and long-term climate projections for fragmented and delayed-action scenarios. *Technol. Forecast. Soc. Change* <http://dx.doi.org/10.1016/j.techfore.2013.09.013> (2013).
78. Johnson, N. *et al.* Stranded on a low-carbon planet: Implications of climate policy for the phase-out of coal-based power plants. *Technol. Forecast. Soc. Change* <http://dx.doi.org/10.1016/j.techfore.2014.02.028> (2014).
79. Luderer, G., Bertram, C., Calvin, K., De Cian, E. & Krieger, E. Implications of weak near-term climate policies on long-term mitigation pathways. *Climatic Change* <http://dx.doi.org/10.1007/s10584-013-0899-9> (2013).
80. Lenton, T. M. *et al.* Tipping elements in the Earth’s climate system. *Proc. Natl Acad. Sci. USA* **105**, 1786–1793 (2008).
81. Matthews, H. D. & Caldeira, K. Stabilizing climate requires near-zero emissions. *Geophys. Res. Lett.* **35**, L04705 (2008).
82. Raupach, M. R. *et al.* Sharing a quota on cumulative carbon emissions. *Nature Clim. Change* <http://dx.doi.org/10.1038/nclimate2384> (2014).
83. Boden, T. A., Marland, G. & Andres, R. J. *Global, Regional, and National Fossil-Fuel CO₂ Emissions in Trends* (Carbon Dioxide Information Analysis Center, Oak Ridge National Laboratory, US Department of Energy, 2013); http://cdiac.ornl.gov/trends/emis/em_cont.html
84. *Statistical Review of World Energy June 2013* (BP, 2013).
85. *CO₂ emissions from fuel combustion 2013* (IEA, 2013).
86. *AR5 Scenario Database* (IIASA, 2014); <https://secure.iiasa.ac.at/web-apps/ene/AR5DB/>

Acknowledgements

P.F. was supported by the European Commission’s 7th Framework Programme (EU/FP7) under Grant Agreements 282672 (EMBRACE) and 603864 (HELIX). G.P.P. and R.M.A. were supported by the Norwegian Research Council (236296). J.G.C. acknowledges the support from the Australian Climate Change Science Program. C.L.Q. was supported by the UK Natural Environment Research Council (NERC)’s International Opportunities Fund (project NE/103002X/1) and EU/FP7 project 283080 (GEOCarbon). This work is a collaborative effort of the Global Carbon Project (<http://www.globalcarbonproject.org>).

Author contributions

P.F., G.P.P., J.G.C., J.R. and C.L.Q. designed the study. P.F. coordinated the conception and writing of the paper. R.M.A. and G.P.P. provided data and analysis on historical and near-term projections of emissions, GDP and carbon intensity. M.S. provided all data on cumulative emission budgets compatible with warming levels from the IPCC WGII scenarios database. J.R. and G.L. coordinated the assessment of trade-offs in delayed action scenarios. R.M.A. produced Figs 1 and 2. J.R. produced Figs 3 and 4. All authors contributed to the writing of the paper.

Additional information

Supplementary information is available in the [online version of the paper](#). Correspondence and requests for materials should be addressed to P.F.

Competing financial interests

The authors declare no competing financial interests.